

TCD - 3908

TROLLEY COLOR DOPPLER



EPCC / PRODUCTS / APPLICATION / SOFTWARE / ACCESSORIES / CONSUMABLES / SERVICES

Analytical Technologies Limited

An ISO 9001 Certified Company

www.analyticalgroup.net

►► Electrical Power

Voltage	100 V~240 V
Power	DC12.8V 3A
Frequency	50/60 Hz

►► Physical Specifications

Equipment size	365mm×300mm×75mm
Equipment weight	80kg
Packing size	490mm×270mm×490mm
Packing weight	220kg

►► Connectivity/Media/Peripherals

Transducer Ports	4
USB Ports	4
Hard Disc	128GB (SSD), 120G/200GB SSD (Optional)
Ethernet Port	2(100Mb/1000Mb)
External Display	VGA, HDMI,
Printer(Optional)	USB Printer, Digital Laser Printer, Digital B/W Thermal Printer
Printing Area	Image, report, Image+report

►► Cine/Image Memory

Cine Memory	1200 frame (max)
Cine Review Speed	1, 2, 4, 8
Cine Review Loop	YES
Cine Capture Function	YES

►► DICOM Connectivity

DICOM3.0 Compliant

►► Image Storage

Storage Format: PNG, AVI, BMP, JPEG, DICOM
 Export Video Format: AVI
 Export Image Format: PNG, JPEG, BMP, DICOM
 USB Flash Drive

►► Technology

- Panoramic Imaging Tech
- All-digital signal processing Tech
- Multi-beam formation Tech
- Speckle Reduction Tech
- Tissue Harmonic Imaging Tech
- Dynamic Tissue Optimization Tech
- Duplex & Triplex Synchronous Display
- Directional Power Doppler
- Imaging Parameters Preset
- Tissue Special Image
- PW Auto Trace
- Update in line
- CF+B mode in one screen
- Complex Model Imaging
- IMT auto measurements
- Virtual convex array
- Trapezoidal imaging

►► General Performance

Digital Broadband	12288 channels
Beam-former	Re-programmable
Transmit Voltage	Adjustable (15 steps)
Beam-former Frequency Range	1~40 MHz

►► Pan/Zoom

Real-Time Image Zoom, Zoom Range: 100%~400%, Up/Down/Left/Right Inversion

►► HARDWARE SPECIFICATION

LED Monitor

Size (Diagonal)	15" Optional 17" 19" 21"
Contrast Ratio	800:1
Resolution	1024×768 pixels
Brightness	230 cd/m ²
Color Depth	24bit
Rotate Angle	± 90°
Grey Levels	256

►► Embedded Speakers

Impedance: 4Ω Power:
5 W

►► UPS (Optional)

►► Imaging Performance

Startup Time (Max)	Avg. < 90 seconds
Preset Switching Time	Avg. < 1 second
Storage Time (Image to Disk)	Avg. < 0.5 second

►► Transducers

Probe	Convex Array Probe	Linear Array Probe	Intra-Cavity Probe	Micro-convex probe
Frequency	Central 3.5 MHz (2.0MHZ to 10.0MHZ)	Central 7.5 MHz (6.0MHZ to 12.0MHZ)	Central 6.5 MHz (5.0MHZ to 9.0MHZ)	Central 4.0 MHz (2.0MHZ to 5.5MHZ)
Pitch	0.516mm	0.352mm	0.216 mm	
Radius	60mm	N/A	10 mm	

►► User Interface

- User Permission setting
- Intuitive Windows-based operating principles
- User-centric control panel with Home Base layout and control customization
- On/Off task light and back-lit illumination of control panel
- Variable brightness indicates active state of function keys

- Easily accessible, full size QWERTY keyboard for text entry, function keys and system programming
- Cine Playback, Multiple Arrows, Configurable Worksheets, Exam Review, Pictograms (Body Marks), System Setup Menu
- On line attention function, tell the user how to operate in the next step

►► IMAGING MODES

B, 2B, 4B, M, B/M, B/C, B/D, B/C/D, B/CFM/D, PDI Color, Dual Color, Simultaneous 2D/Color Compound, PW, Duplex/Triplex, CFM, CDE, PD, Directional PD, CD

►► B-Mode

Maps	17
Focus Count	Max. 4
Gain	0~255
TGC	8 Sliders
Dynamic Range	0~150dB
Depth	Max. 30cm
Acoustic Power	0 ~ 15
Chroma	0~7
Grayscale Levels	256
Frame Rate	Max.1028Hz
Persistence/ Frame Average	Up to 7
Image Optimization	0~6
Top/Bottom/Left/Right Reverse	Yes
Speckle Reduction	Yes
Second Harmonics	Yes

►► M-Mode

Maps	16
Chroma	16
Sweep Speed	3
Gain	0~255
Distance	Point-to-Point
Max Steer Angle	15°
Diameter Reduction	Point-to-Point Heart Rate/Time/Distance/Slope Side-by-Side/Bottom

►► Color Mode

Gain	0~255
Color Maps	0~6
Doppler Steer Angles	7 Steps
Wall Filter	0~3
Spatial Filtering	0~3
Acoustical Power	0 ~ 15
Doppler Multi-Frequency	2MHz~10MHz
Line Density Max	256 Lines
Persistence/Frame Average	0~7
Bloodstream Gain	0~127
Packet Size	8~15 Baseline/Invert/Color ROI/M-Mode

►► PW Mode

Gain	0~255
D Linear Velocity	0~2
Doppler Steer Angles	7 Steps
Edge Enhancement	0~7
Wall Filtering	0~3
Audio	0~255
Correction Angle	80°/-80°
Doppler Multi-Frequency	2MHz~10MHz
Pulse Repetition Frequency	2khz~6khz
Chroma	0~7
Baseline Adjustment	0~6
Three Synchronizations	Yes
Spectrum Inversion	Yes

►► MEASUREMENTS SPECIFICATIONS

Analysis Packages

Basic, Obstetrics, Gynecology, Urology, Andrology, Cardiac, Peripheral Vascular
Venous, Small Parts, Orthopedic

►► Basic Measurement

B-mode basic measurement Distance, Angle, Perimeter and Area (ellipse or track-based method), Volume, Histogram, Sectional Map

M-mode basic measurement Heart Rate, Time, Distance, Speed

►► Obstetrics

Applicable to multiple birth measurements.

All general measurements and calculations

Obstetrical data versions to calculate gestational age:

— Two fixed data revisions: Asia & Europe

— One editable data version: User Custom

— Each version can estimate the gestational age and expected date of confinement based on measured gestational sac (GS), biparietal diameter (BPD), crown-rump length (CRL), femur length (FL), humeral length (HL), abdominal transverse diameter (ATD), vertebral length (LV), occipitofrontal diameter (OFD), abdominal circumference (AC) and head circumference (HC)

Obstetrical Report

Amniotic Fluid Index (AFI)

BPD/OFD, FL/AC, FL/BPD and HC/AC ratio

Estimate Weight Of Fetus

Gestational Age

Expected Date Of Confinement (LMP/BBT)

Fetal Biophysical Score

Fetus Growth Curve

►► Gynecology

All general measurements and calculations
Uterus, Ovary, Follicle
Gynecology Report

►► Urology

All general measurements and calculations
Kidney, Bladder, Residual Urine Volume
Urology Report

►► Andrology

All general measurements and calculations
Prostate, Testis
Prostate Specific Antigen (PSA)
Prostate Specific Antigen Density (PSAD)
Andrology report

►► Small Parts

All general measurements and calculations
Thyroid, Mammary Gland, Nodule
Small Parts Report

►► Cardiac

All general measurements and calculations
Heart Rate
Blood Flow Rate
Left Ventricle
Aorta
Mitral Valve
Ventricle (left/right)
Area Stenosis (% area Sten)
Vascular Diameter Stenosis (% Diam Sten)
Body Surface Area (BSA)
Cardiac Report

►► Peripheral Vascular

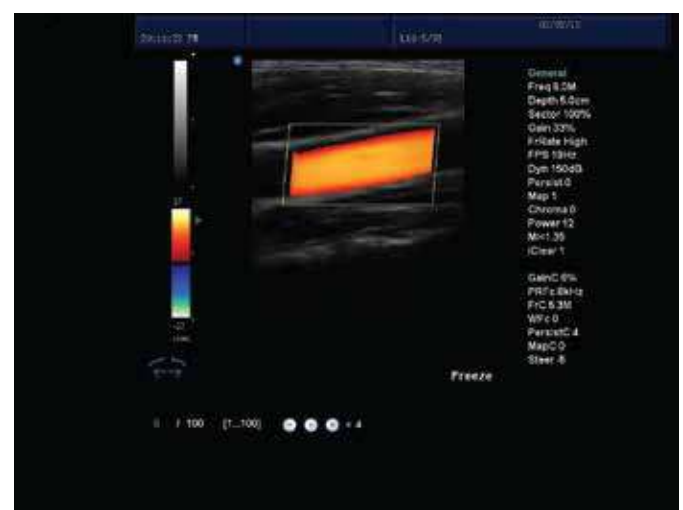
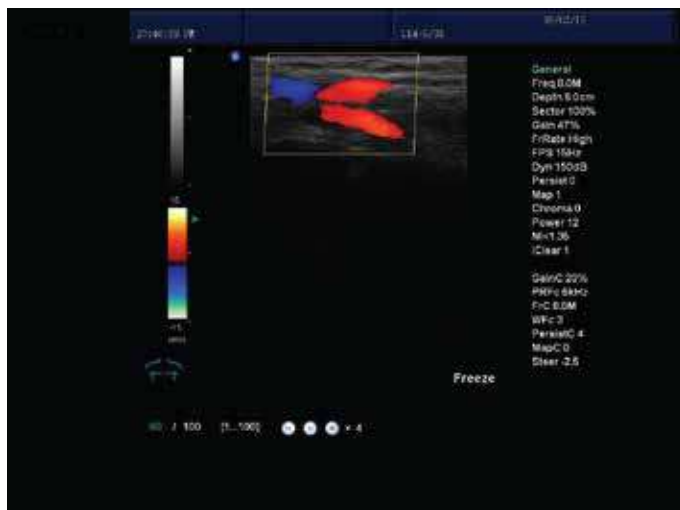
All general measurements and calculations
 Area Stenosis
 Vessel Diameter Stenosis
 Peripheral Vascular Report
 IMT auto measurements

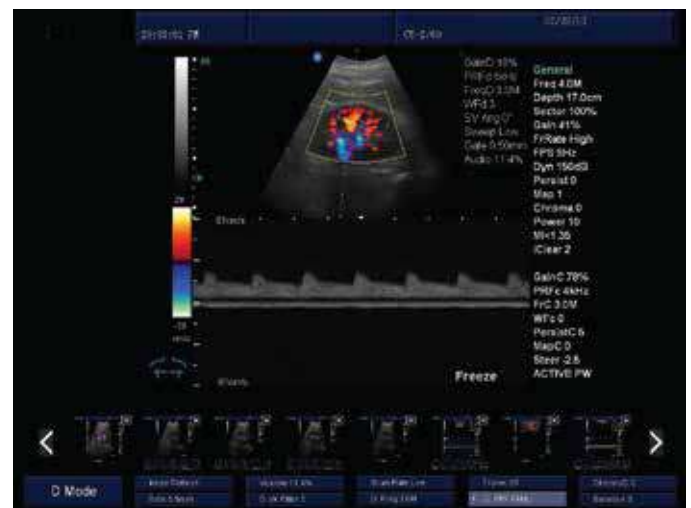
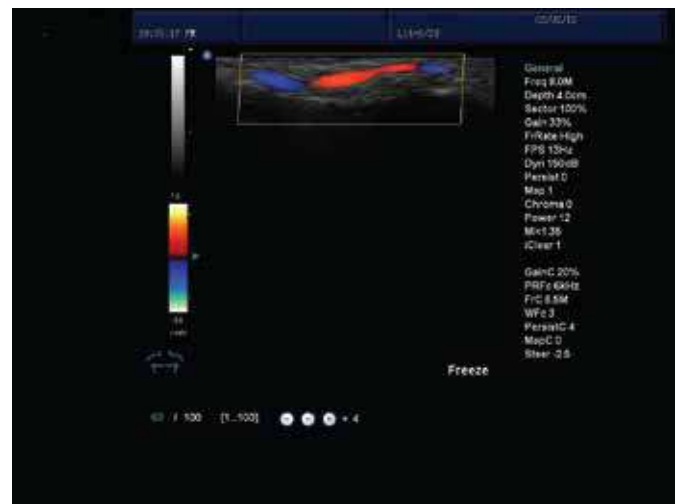
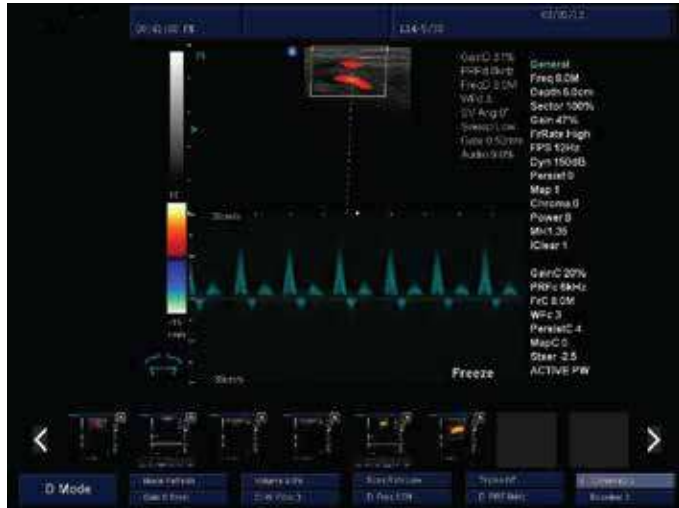
►► Venous

All general measurements and calculations
 Right and left extremity measurements
 Venous patient report

►► Orthopedic

All general measurements and calculations
 Right and left hip angle measurement
 Hip angle patient report







HPLC Servicing, Validation, Trainings and Preventive Maintenance :

HPLC Servicing :HPLC Servicing : We have team of service engineers who can attend to any make of HPLC promptly @the most affordable cost.

Trainings :We also take up preventive Maintenance to reduce downtime of HPLC's Trainings.

AMC's/CMC :AMC's/CMC :We offer user training both in-House and at customer sites on HPLC principles, operations, trouble-shooting.

Validations :Validations :We have protocols for carrying out periodic Validations as per GLP/GMP/USFDA norms.

Instruments :Instruments :We offer instruments/Renting Services Modules like pumps,detector etc. on Rent.



About Analytical Technologies

Analytical Technologies is synonymous for offering technologies for doing analysis and is the Fastest Growing Global Brand having presence in at least 96 countries across the global. Analytical Technologies Limited is an ISO:9001 Certified Company engaged in Designing, Manufacturing, Marketing & providing Services for the Analytical, Chromatography, Spectroscopy, Bio Technology, Bio Medical, Clinical Diagnostics, Material Science & General Laboratory Instrumentation. Analytical Technologies, India has across the Country operations with at least 4 Regional Offices, 6 Branch Offices & Service Centers. Distributors & Channel partners worldwide.

Our Products & Technologies



UV/VIS
Spectro 2080+
Double Beam



Infra FTIR



Optima Gas
Chromatograph
3007



Optima Gas
Chromatograph
2979 Plus



Flash
Chromatograph



Atomic Absorption
Spectrophotometer



Liquid Particle
Counter



Optical Emission
Spectrophotometer



DSC/TGA



Semi Auto Bio
Chemistry Analyzer



HEMA 2062
Hematology
Analyzer



Micro Plate
Reader/Washer



URINOVA 2800
Urine Analyzer



Total Organic
Carbon 3800



Fully Automated
CLIA



NOVA-2100
Chemistry Analyzer



PCR/Gradient PCR/
RTPCR



TOC
Analyzer



Laser Particle
Size Analyzer



Ion Chromatograph



Water purification
system

Regulatory compliances



Corporate Social Responsibility

Analytical Foundation is a nonprofit organization (NGO) found for the purpose of:



Analytical
Foundation

1. Research & Innovation Scientist's awards/QC Professional Award : Quality life is possible by innovation only and the innovation is possible by research only, hence ANALYTICAL FOUNDATION is committed to identify such personalities for their contributions across various field of Science and Technology and awarding them yearly. To participate for award, send us your details of research / testing / publication at Info@analyticalfoundation.org

2. Improving quality of life by offering YOGA Training courses, Work shops/Seminars etc.

3. ANALYTICAL FOUNDATION aims to DETOXYFY human minds,souls and body by means of yoga, Meditation, Ayurveda, Health Care, Awards, Media, Events, Camps etc.



Analytical[®]
Technologies Limited

HPLC Solutions MultipleLabs Analytical Bio-Med Analytical Distributors Analytical Foundation (Trust)

Corporate & Regd. Office:
Analytical House, # E67 & E68,
Ravi Park, Vasna Road, Baroda,
Gujarat 390 015. INDIA

T: +91 265 2253620
+91 265 2252839
+91 265 2252370
F: +91 265 2254395

E: info@hplctechnologies.com
info@multiplelabs.com
info@analyticalgroup.net
info@analyticalbiomed.com

W. www.analyticalgroup.net
www.hplctechnologies.com
www.multiplelabs.com
www.ais-india.com

Sales & Support Offices:
across the country :
Distributors & Channel
partners World Wide